

With over **850,599 Internally Displaced Persons (IDPs)** and **571,468 returnees in the country**, IOM Mozambique supports the Ministry of Justice, Constitutional and Religious affairs and the Ministry of Interior to deliver Birth Certificates and Identity Cards to undocumented migrants, including internally displaced persons, and host communities, which is one of key criteria for durable solutions. In parallel, IOM conducts capacity building of Government officials, and supports Government-led coordination platforms on Legal Identity in Cabo Delgado. IOM's Legal Identity operations are conducted in coordination with the United Nations Legal Identity Agenda (UNLIA) actors in Mozambique, and in accordance with the **IOM Legal Identity Strategy**, the **IOM Country Strategy for Mozambique 2021 - 2023**, and the **IOM Roadmap for Northern Mozambique 2023**.

KEY FIGURES

48,605

PEOPLE REACHED

40,697

BIRTH CERTIFICATES ISSUED

7,908

IDENTITY CARDS ISSUED

131

GOVERNMENT OFFICIALS TRAINED

12

DISTRICTS

20

LOCALITIES COVERED

SUCCESS STORY

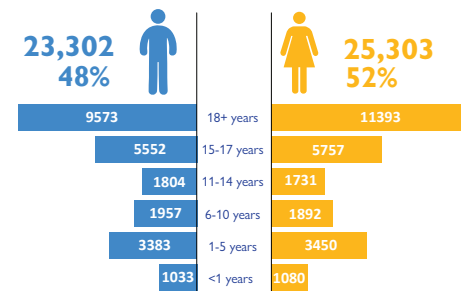


Fatima's life in the remote village of Megaruma, located in the Chiure district of northern Mozambique, was marked by uncertainty. Originally from the coastal town of Mocimboa da Praia, she had been significantly affected by the ongoing conflict in the region, which led her to seek refuge in the comparatively safer Chiure. In addition to this, Fatima faced an extra challenge: she had a physical disability that required continuous medical attention. Due to her lack of legal identification, accessing the healthcare system had been extremely difficult, as she couldn't move freely without the fear of being asked for identification by the police.

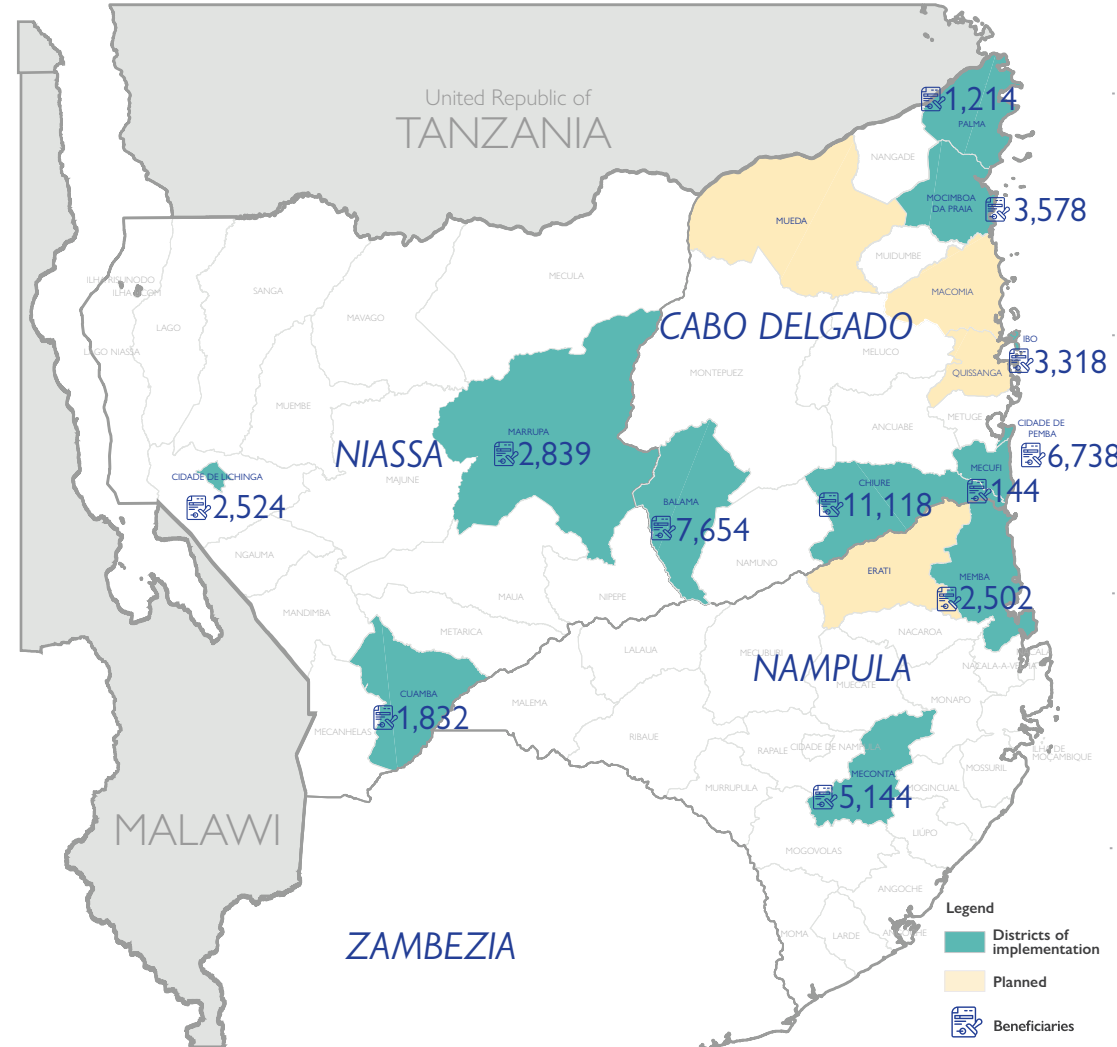
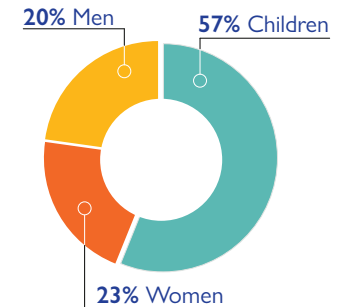
With the assistance of IOM, Fatima managed to obtain her legal identity, even amidst displacement. This process not only granted her a sense of belonging and security, but also enabled her to access the healthcare system she so urgently needed.

In situations of displacement, having legal identity is a crucial factor in supporting displaced individuals on their journey towards finding durable solutions.

GENDER AND AGE BREAKDOWN



DEMOGRAPHICS



The depiction and use of boundaries, geographic names, and related data shown on maps and included in this report are not warranted to be error free nor do they imply judgment on the legal status of any territory, or any endorsement or acceptance of such boundaries by IOM.

Financed by:



This activity contributes to:

